

Foster City Medical Pavilion

1241 E. Hillsdale Blvd., Foster City, California

Newly Remodeled Class A Medical/Dental Office Building



Foster City Medical Pavilion

1241 E. Hillsdale Blvd., Foster City, California

LOCATION

- Opportunity to use Medicare-accredited surgery center in building
- Newly remodeled Class A Medical/Dental Office Building
- Suites from 928 RSF to 3,410 RSF that can be build to suit
- Attractive financing available to tenants for build-out, equipment and working capital through preferred lender
- Minutes to HWY 101/92 interchange, offering easy access to Peninsula and East Bay Markets
- Close proximity to SFO and OAK Airports
- Approximately 5 per 1,000 sf parking ratio



BUILDING

- Gorgeous new building facade and lobby structure
- New gurney-accessible elevator
- New roof, new HVAC, repaved parking lot and significant landscape renovations
- Institutional ownership. On-site management
- Home to Foster City Medical Center (primary care), Zouves Fertility Clinic and Apex Pain Center
- Significant tenant improvement package

Foster City Medical Pavilion

1241 E. Hillsdale Blvd., Foster City, California

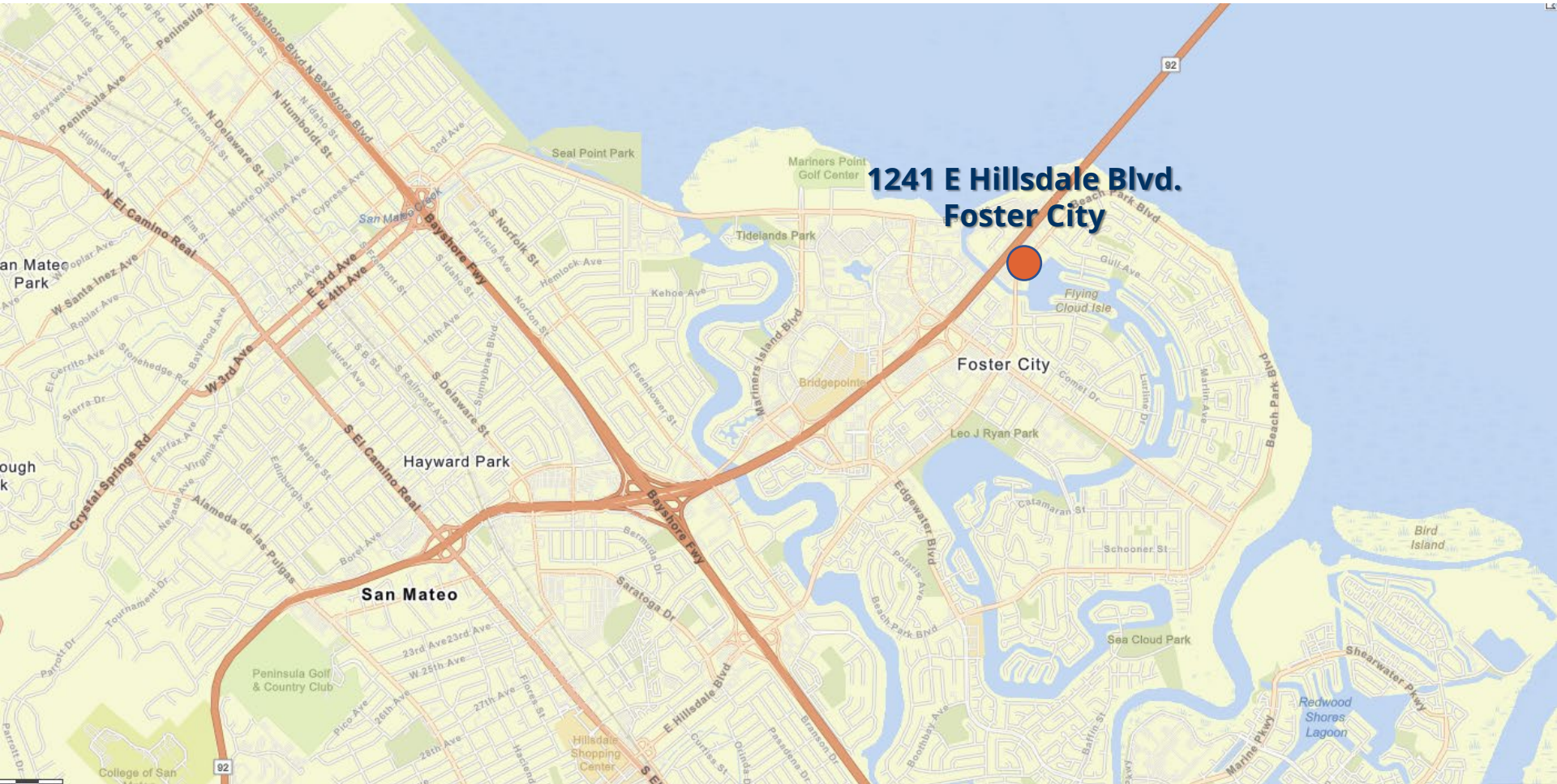


Foster City Medical Pavilion

1241 E. Hillsdale Blvd., Foster City, California

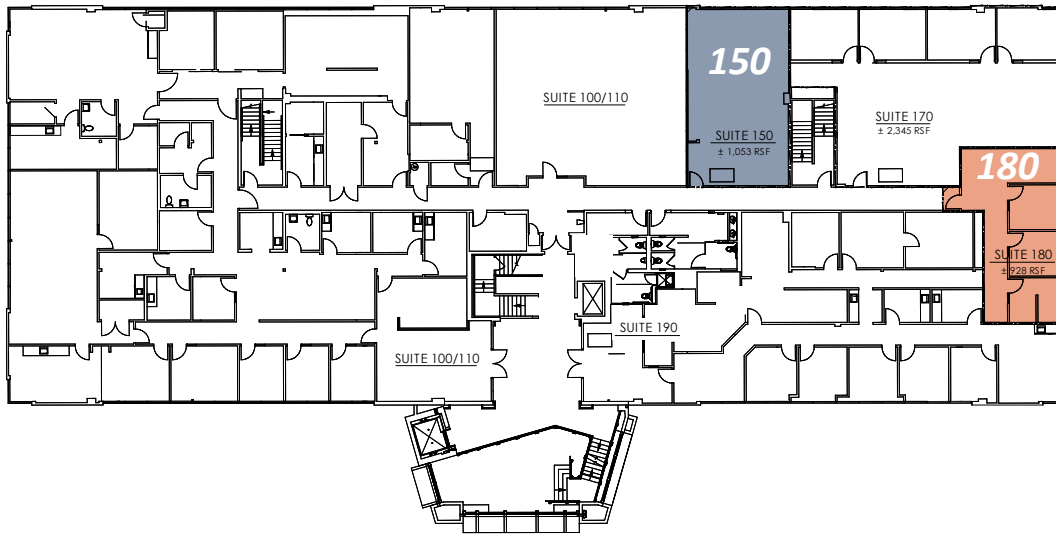


1241 E. Hillsdale Blvd., Foster City, California



Foster City Medical Pavilion

1241 E. Hillsdale Blvd., Foster City, California



FIRST FLOOR

Suite 150 1,053 RSF

Extensive interior glass, open area. Close to common restrooms

Suite 180 928 RSF

Recently remodeled suite with 3 offices/ exam rooms. Excellent natural light



SECOND FLOOR

Suite 220 2,236 RSF

Luxurious build-out for plastic surgeon currently with 3 exam rooms, 1 very large procedure room, 1 regular procedure room. 2 offices, waiting area and internal restroom. *Can be combined with adjacent Suite 230 for a total of 3,410 sf*

Suite 230 1,174 RSF

Restroom. Can be built to suit. *Can be combined with adjacent Suite 220 for a total of 3,410 sf*

Suite 250 4,288 RSF

Excellent natural light, 1 large procedure room, 1 office substantial storage. Divisible to approximately 2,000 sf