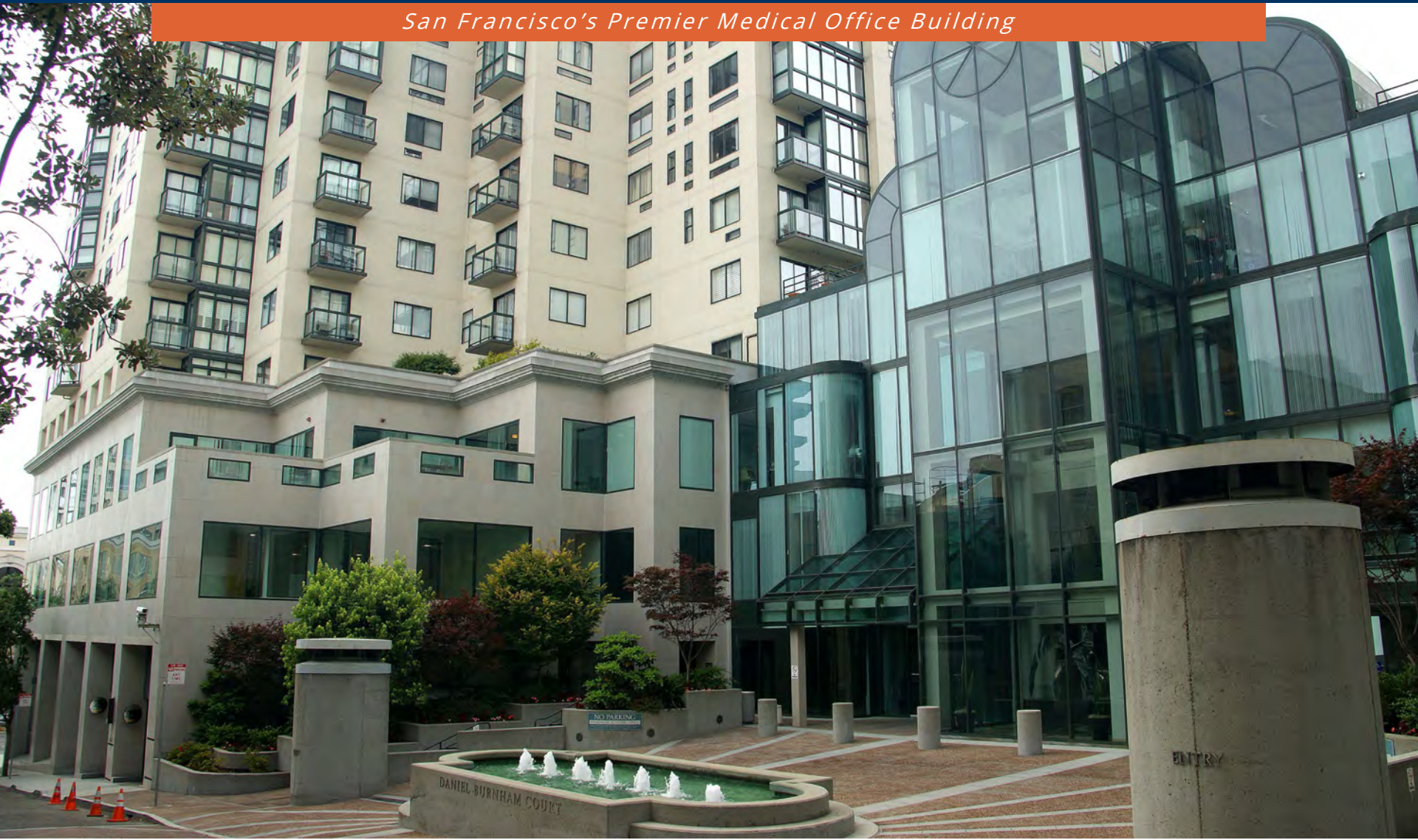


BAYSIDE REALTY PARTNERS PRESENTS

One Daniel Burnham Court San Francisco, California

San Francisco's Premier Medical Office Building



BAYSIDE REALTY PARTNERS PRESENTS

One Daniel Burnham Court

San Francisco, California

LOCATION

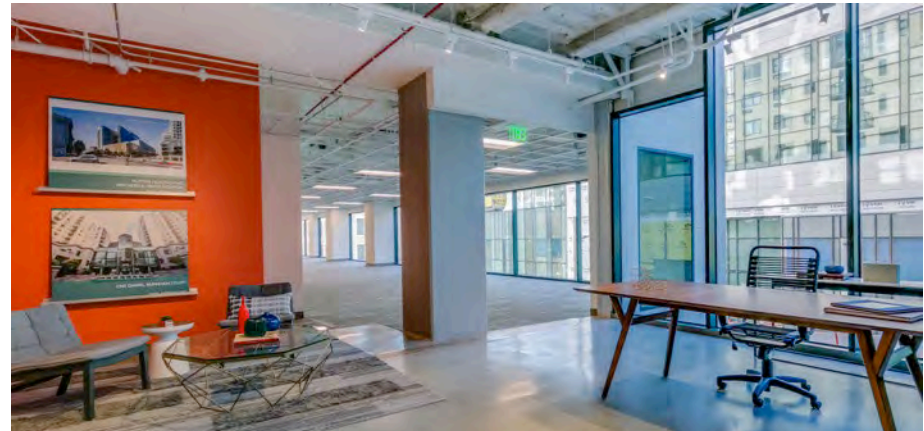
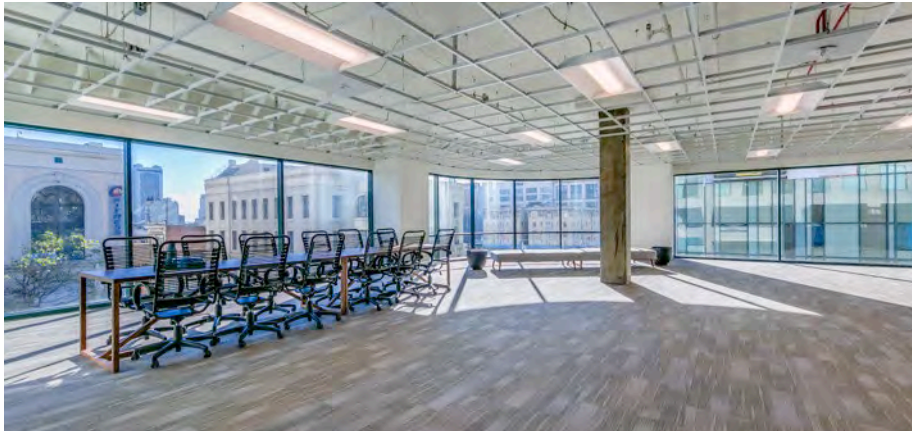
- Central San Francisco location on Van Ness Avenue (101) at Post Street
- Adjacent to Sutter's new, world class, 274-bed CPMC Van Ness Campus
- Excellent public transit options, including MUNI and BART



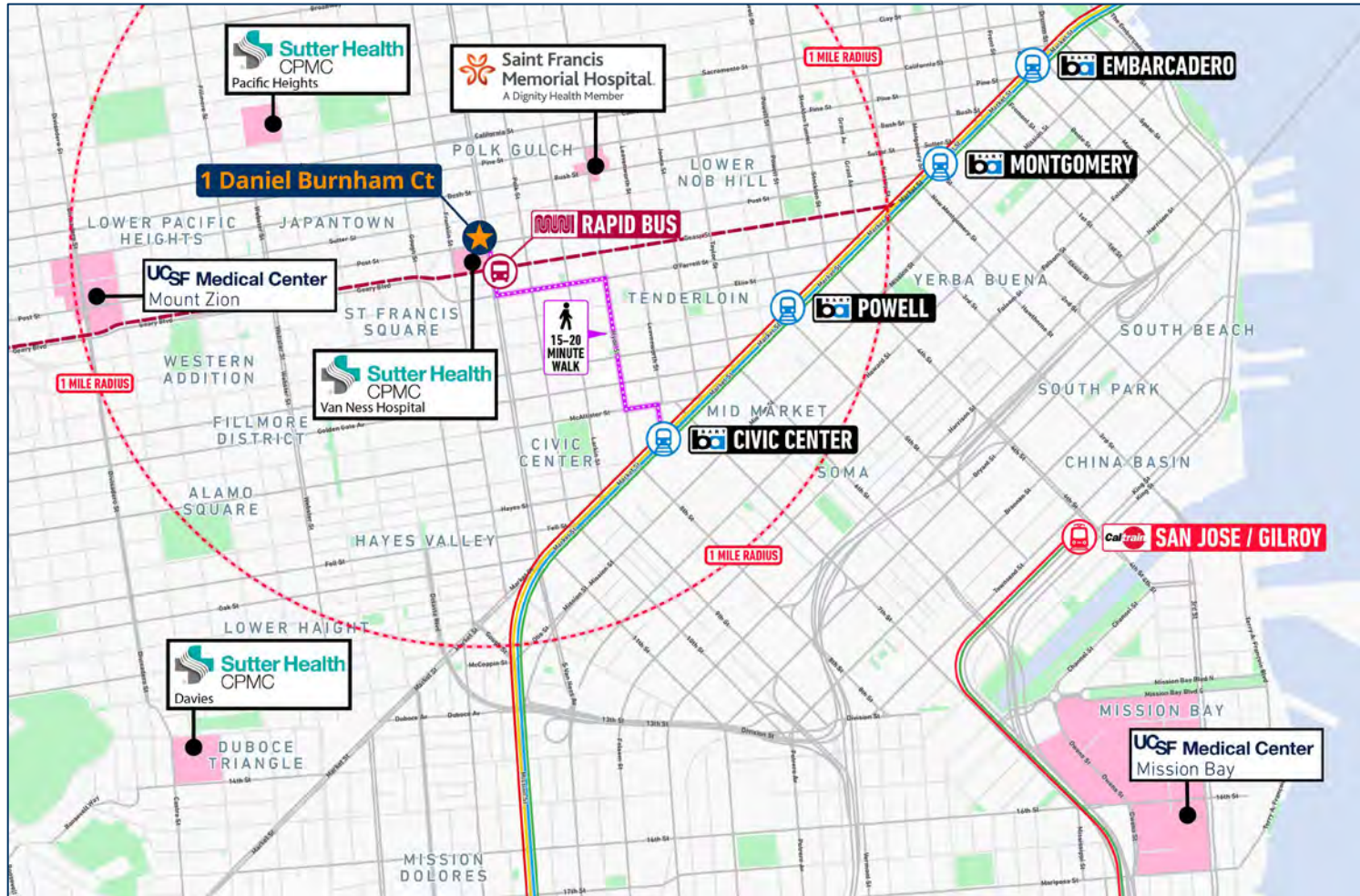
BUILDING

- Private drop-off and pickup driveway at entrance
- Dedicated on-site parking
- Expansive lobby with seating and 24/7 security
- Stable, aggressive new institutional ownership
- On-site management and maintenance staff
- Suites available from 1,000 SF to 11,000 SF

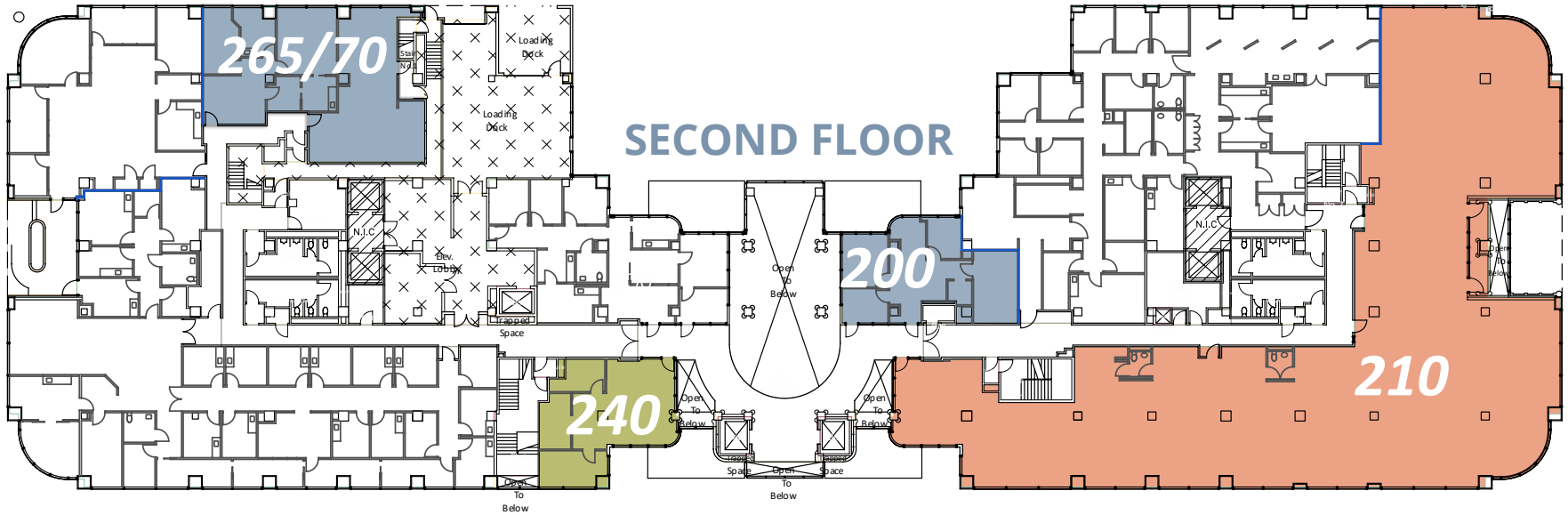
BAYSIDE REALTY PARTNERS PRESENTS
One Daniel Burnham Court
San Francisco, California



BAYSIDE REALTY PARTNERS PRESENTS
One Daniel Burnham Court
San Francisco, California



BAYSIDE REALTY PARTNERS PRESENTS
One Daniel Burnham Court
 San Francisco, California



Suite 200 **1,267 RSF**
 Excellent visibility and access from elevator lobby. Very high ceilings with unparalleled natural light. 5 existing offices

Suite 240 **1,116 RSF**
 Mostly open space. Immediately off elevator lobby, with excellent visibility. 4 private offices

Suite 210 **10,967 RSF**
 Excellent visibility and access to elevator lobby, sweeping views up and down Van Ness Avenue

Suite 265/70 **2,340 RSF**
 5 exam rooms, large open space, kitchen.
Available April 2021

BAYSIDE REALTY PARTNERS PRESENTS
One Daniel Burnham Court
 San Francisco, California



Suite 300/310 4,531 RSF
 Unique opportunity to lease suite with immediate proximity to elevator lobby, excellent identity and an abundance of natural light

Suite 300 1,565 RSF
 5 offices/exam rooms. Close to elevator lobby. Excellent natural light. *Can be combined with Suite 310 to total 4,531 SF*

Suite 310 2,966 RSF
 3 offices/exam rooms. Very large conference room. Excellent natural light. *Can be combined with Suite 300 to total 4,531 SF*

Suite 325 1,831 RSF
 Open area, ready for build-out

Suite 365 6,282 RSF
 12 exam rooms, 1 exam room with sink/cabinets, 4 offices, very large kitchen. Immediately off elevator lobby. Excellent natural light

Suite 370 3,261 RSF
 Mostly open corner space with excellent glass-line. 2 offices and large conference room. *Can be combined with Suite 388 to total 4,584 SF*

Suite 388 1,323 RSF
 Medical suite with 6 offices/exam rooms. *Can be combined with Suite 370 to total 4,584 SF*