

# DE ANZA MEDICAL BUILDING

10430 S. DE ANZA BLVD, CUPERTINO, CA 95014

## AVAILABLE SUITE:

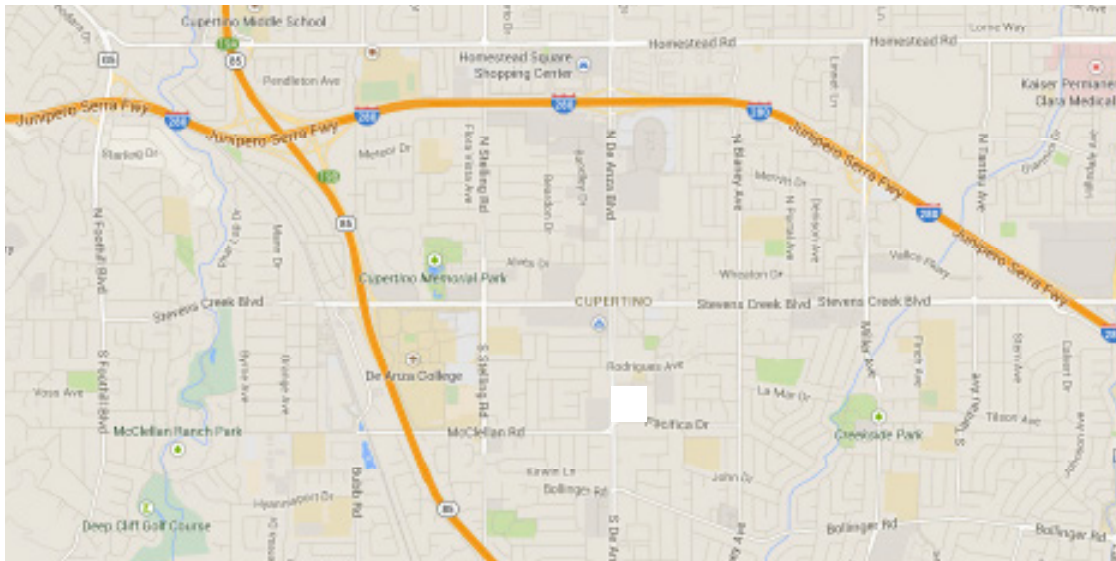
Suite 260: ±1,732 RSF (dental)

Suite 160: ±1,145 RSF (dental)

Suite 110: ±610 RSF

## LEASE RATE:

\$4.50 FSG



## FEATURES:

- » Suite 160 & 260 are both plumbed for dental
- » Suite 110 is built out for a general office use or acupuncturist
- » Central Cupertino location
- » Close to Cupertino Civic Center, Library, City Hall and Apple HQ
- » Easy access to Freeway 280 and 85
- » Call to tour!

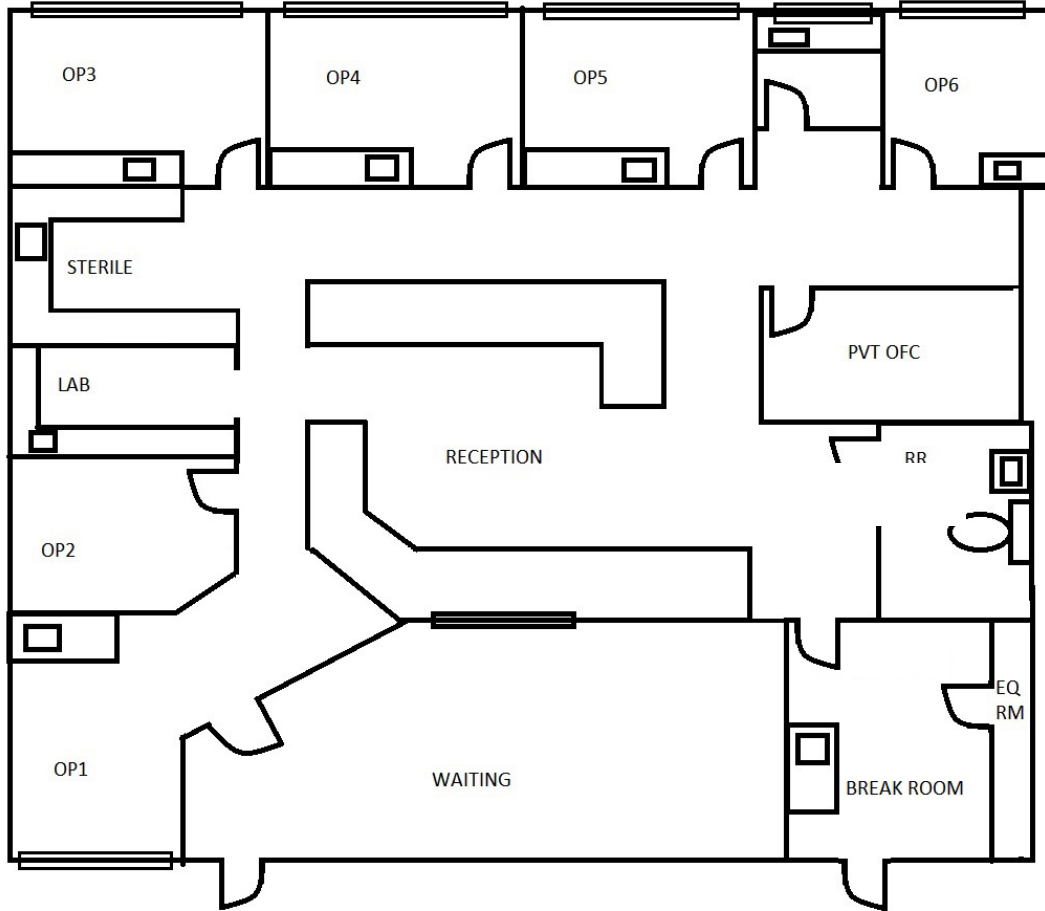
# DE ANZA MEDICAL BUILDING

10430 S. DE ANZA BLVD, CUPERTINO, CA 95014



## Suite 260

±1,732 RSF

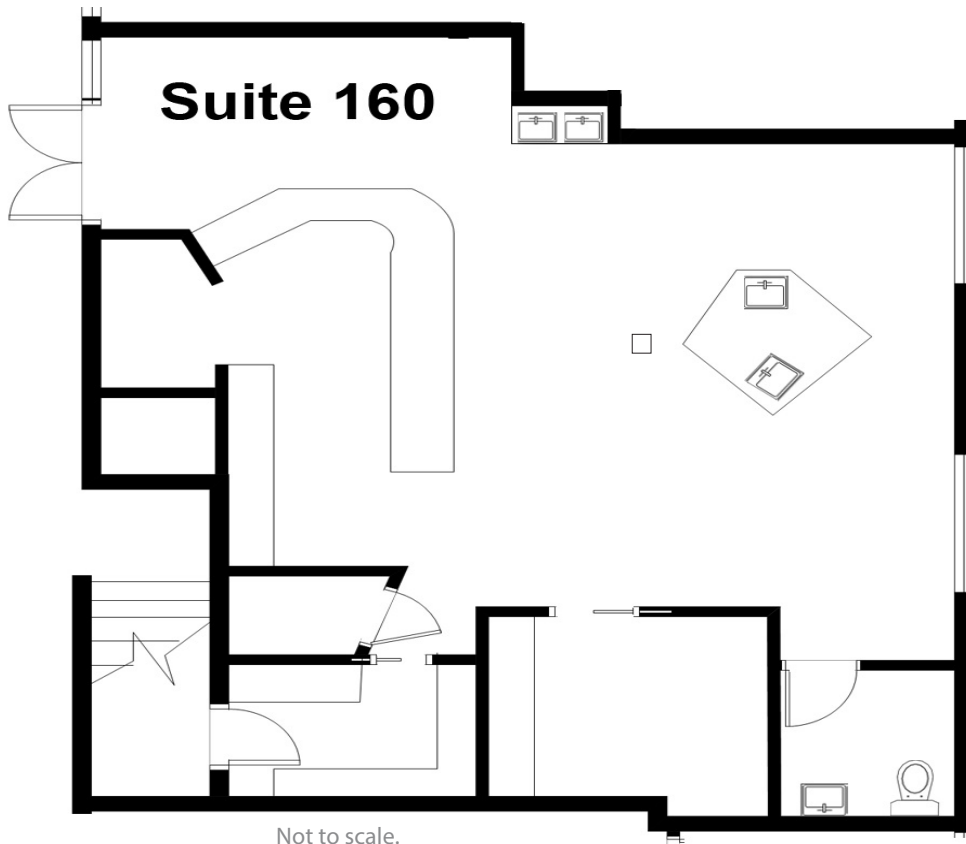


# DE ANZA MEDICAL BUILDING

10430 S. DE ANZA BLVD, CUPERTINO, CA 95014



**Suite 160**  
±1,145 RSF



**Suite 110**  
±610 RSF

Not to scale.  
All dimensions  
are approximate.

