

1720

BURLINGAME, CA

FULL RENOVATION IN PROGRESS

±1,955 TO ±7,334 RSF AVAILABLE

EL CAMINO REAL

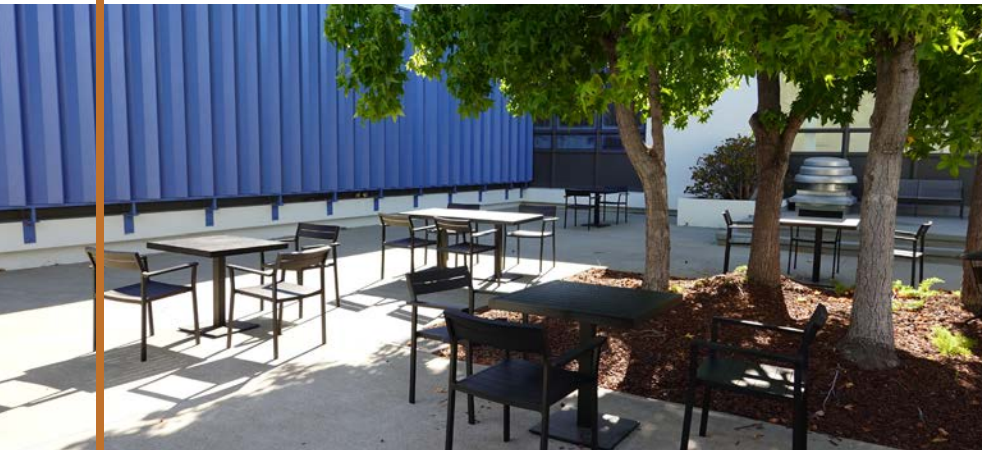


1720

BURLINGAME, CA

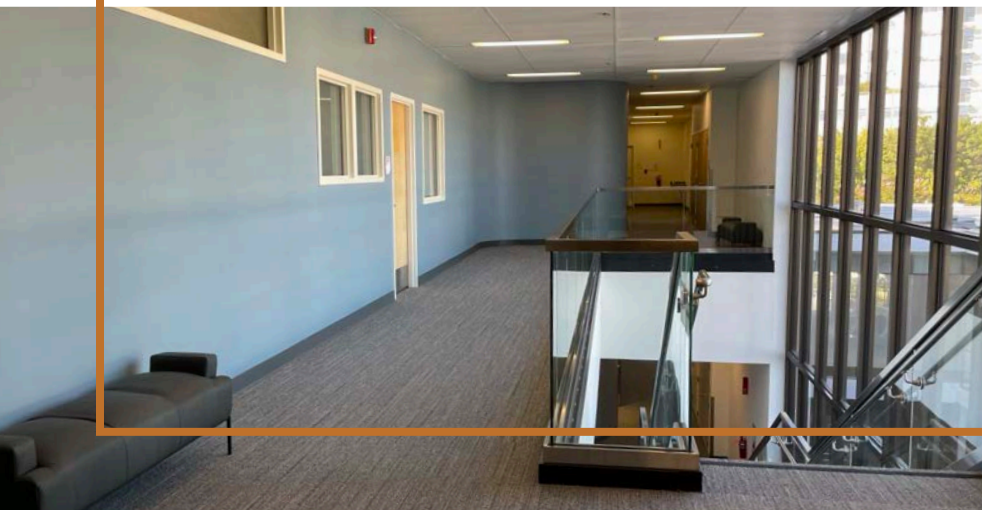
EL CAMINO REAL

- Prime Medical Office Space
- Across from Mills-Peninsula Medical Center
- Close Proximity to Milbrae Bart and Caltrain Station
- Monument Signage Available
- Ample Free Parking for Staff and Patients
- Easy Access to I 280, Hwy 101, and SR 82



NEW IMPROVEMENTS

- Large Indoor/Outdoor Amenity Area
- New Exterior Entry and Lobby Area
- Upgraded Common Areas
- TI's Available

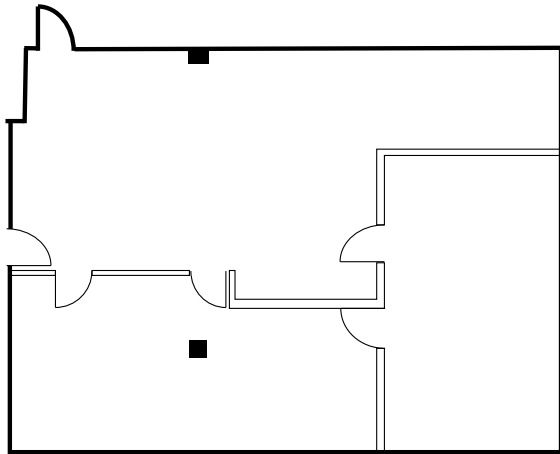


FLOOR PLANS

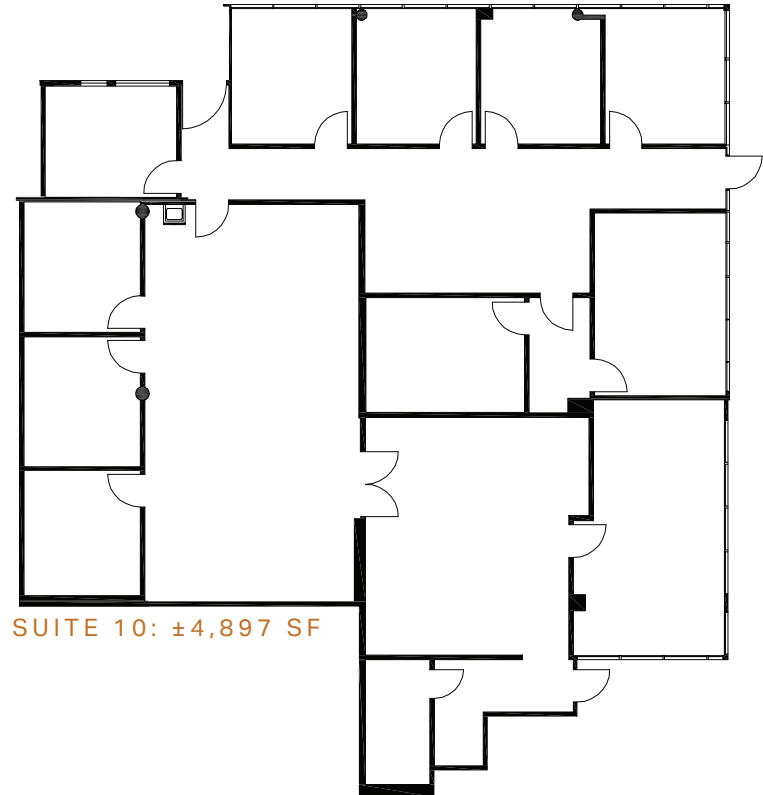
1720

BURLINGAME, CA

EL CAMINO REAL



SUITE 5: $\pm 1,955$ SF



SUITE 10: $\pm 4,897$ SF

FLOOR PLANS

1720

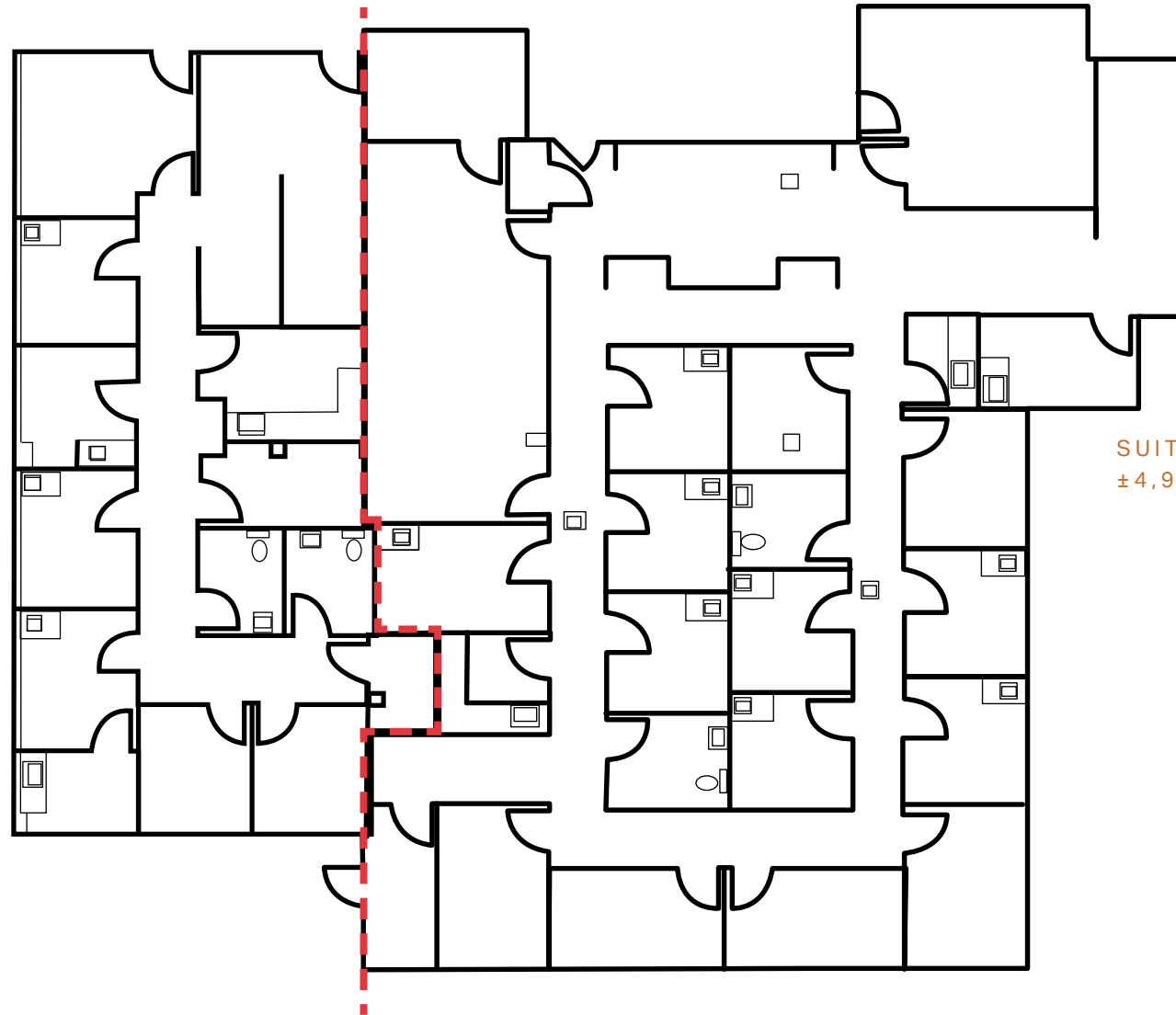
BURLINGAME, CA

EL CAMINO REAL

SUITE 145 & SUITE 150: $\pm 7,334$ SF

SUITE 145:
 $\pm 2,360$ SF

SUITE 150:
 $\pm 4,974$ SF



Demising Wall

LOCAL AMENITIES

1720

BURLINGAME, CA

EL CAMINO REAL

- Across from Mills-Peninsula Medical Center
- Close Proximity to Milbrae Bart and Caltrain Station
- Easy Access to Hwy 101, I-280, and SR 82



1720

BURLINGAME, CA

EL CAMINO REAL

