

Potrero Business Center: 1740-1760 Cesar Chavez Street

San Francisco, CA 94124

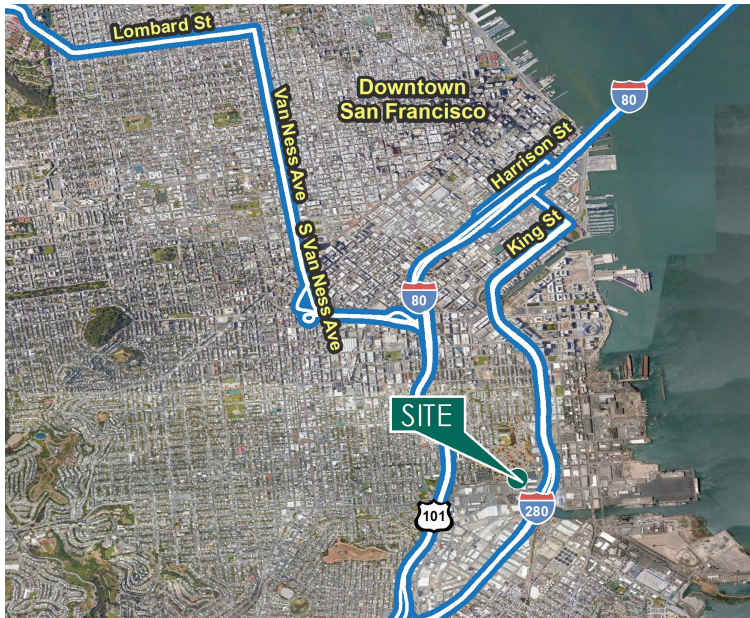
±2,160 SF – 10,933 SF Available

Units 1740-G, 1750-A, 1750-J & 1760-D



Potrero Business Center: 1740-1760 Cesar Chavez Street

San Francisco, CA 94124



±2,160–10,933

square feet available

3 miles

from Market Street

Available Units

Property Description

- **1740-G:** ±10,933 SF of flex space/previously public assembly (grandfathered in)/divisible; Power TBD
- Available Now
- **1750-A:** ±10,271 SF of office/medical clinic/flex space; 400 amps at 120/208V
- Available Now
- **1750-J:** ±3,995 SF of R&D/office/warehouse; 100 amps at 120/208V
- Available August 2021
- **1760-D:** ±2,160 SF of R&D/office/warehouse Power TBD
- Available Now

Location

- Potrero Business Center is centrally located between US 101, I-280, and just a few blocks from the Third Street T-Line
- Suburban business park setting in urban location

Zoning

- Flexible Zoning **PDR**
 - Production, Repair, Distribution

Local Advantages

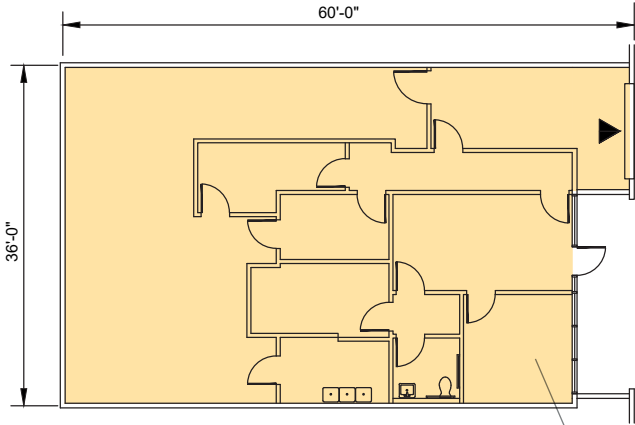
- Great location—10 minutes to Downtown SF, 10 minutes to SFO, walking distance to MUNI T Line on Third Street
- Rare generous free off street parking supporting the complex
- Also, on street parking surrounding the property on Mississippi and Missouri Streets
- Close to restaurants, cafes and recreation with deli on-site
- Bike path along Cesar Chavez Street



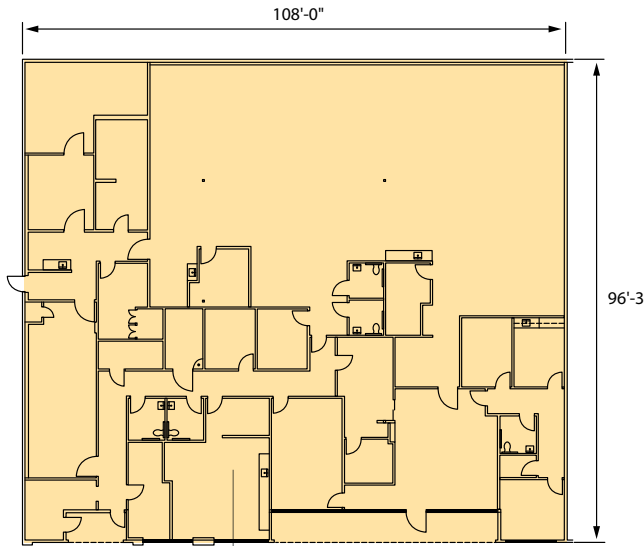
Potrero Business Center: 1740-1760 Cesar Chavez Street

San Francisco, CA 94124

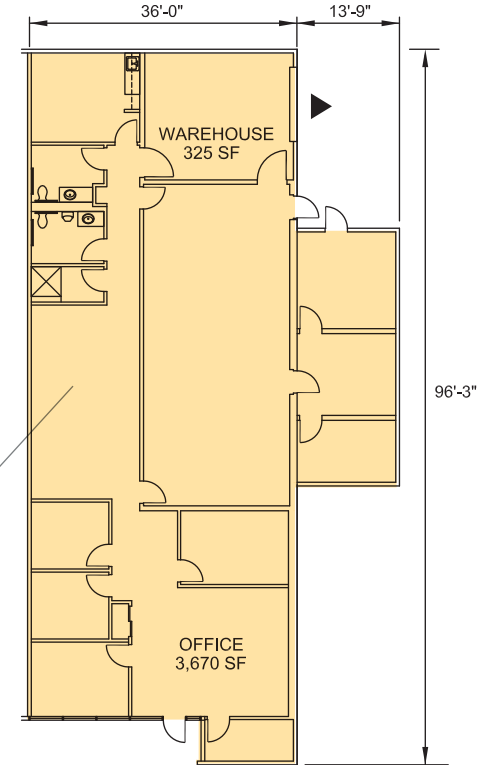
1760-D CESAR CHAVEZ STREET
SAN FRANCISCO, CA
±2,160SF



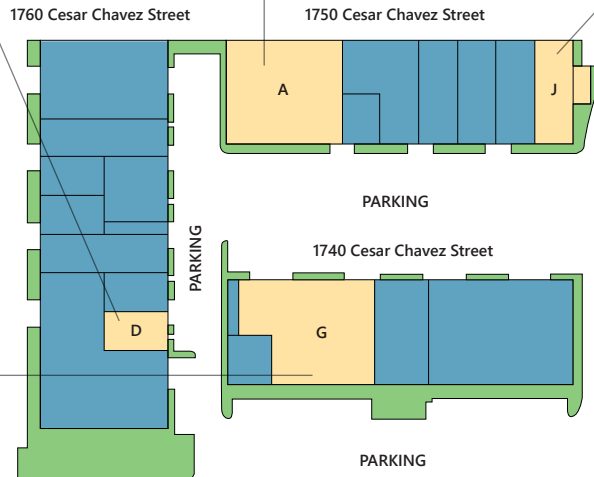
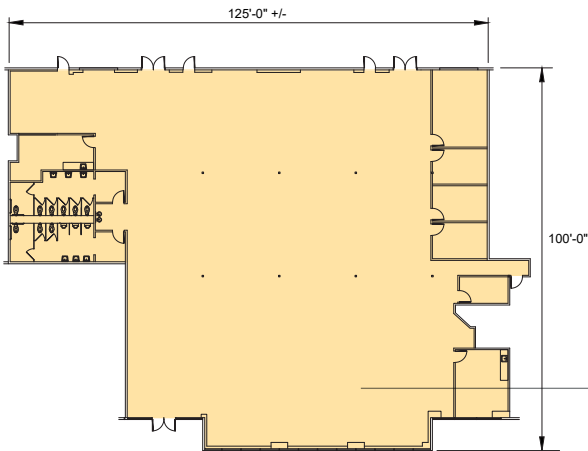
1750-A CESAR CHAVEZ STREET
SAN FRANCISCO, CA
±10,271 SF



1750-J CESAR CHAVEZ STREET
SAN FRANCISCO, CA
±3,995 SF



1740-G CESAR CHAVEZ STREET
SAN FRANCISCO, CA
±10,933 SF



- AVAILABLE
- LEASED
- LAND
- DRIVE-IN DOOR

