

601 Van Ness Avenue, Suite 2018 San Francisco, California

Opera Plaza, San Francisco's Premier Mixed-Use Project

***Only Move-In
Ready Medical
Space Available
Now on Van Ness
Avenue***

**Medical Office Space
for Sublease through
April 30, 2027**

Approximately 2,376 sf

4 large exam rooms

2 large offices with excellent
window line

Conference room

Kitchenette

Restroom

Large waiting room and
staff area



601 Van Ness Avenue, Suite 2018

San Francisco, California

LOCATION

- Very close to CPMC Medical Center in heart of Van Ness Corridor medical district
- Walking distance to BART
- Main MUNI lines on Van Ness

SUBLEASE

- Term is through April 30, 2027

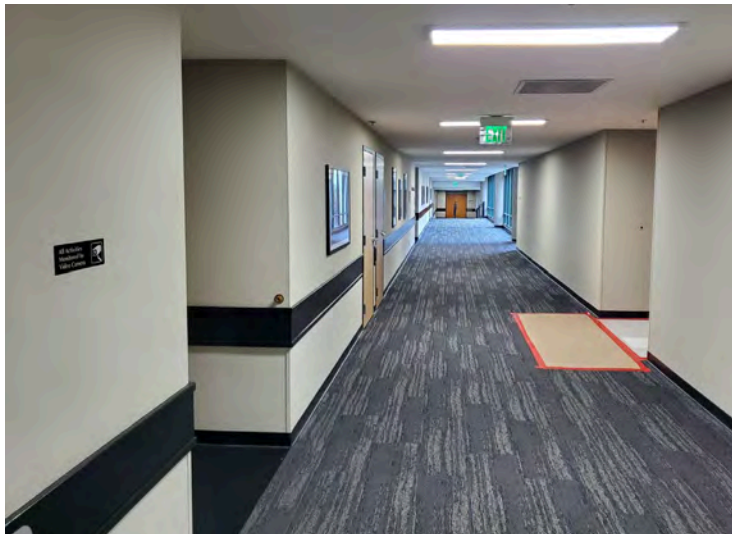
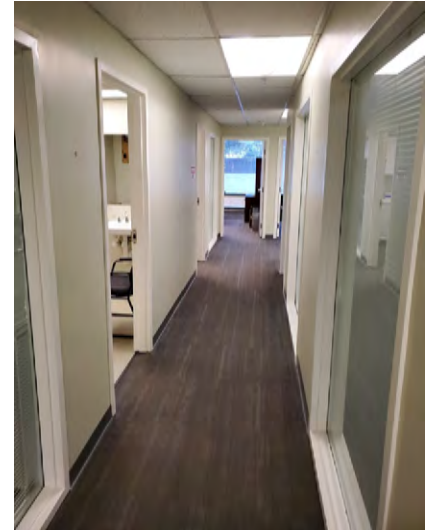


BUILDING

- Opera Plaza offers a unique mix of retail (Max's Opera Café, Peets Coffee, Books Inc), medical office, professional office and residential
- Excellent on-site parking
- Attractive atrium area
- On-site management
- Recently upgraded common areas

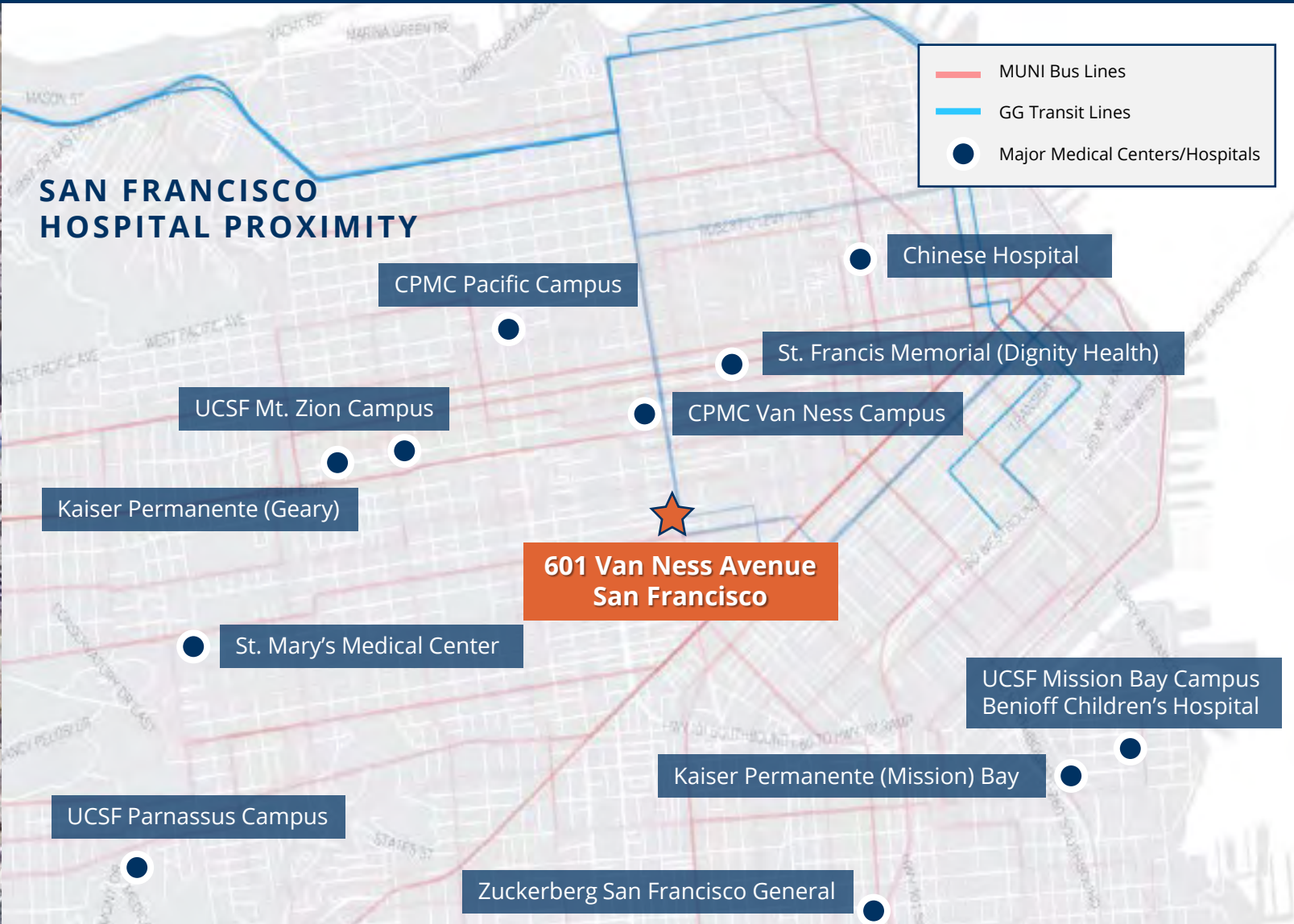
601 Van Ness Avenue, Suite 2018

San Francisco, California



601 Van Ness Avenue, Suite 2018

San Francisco, California

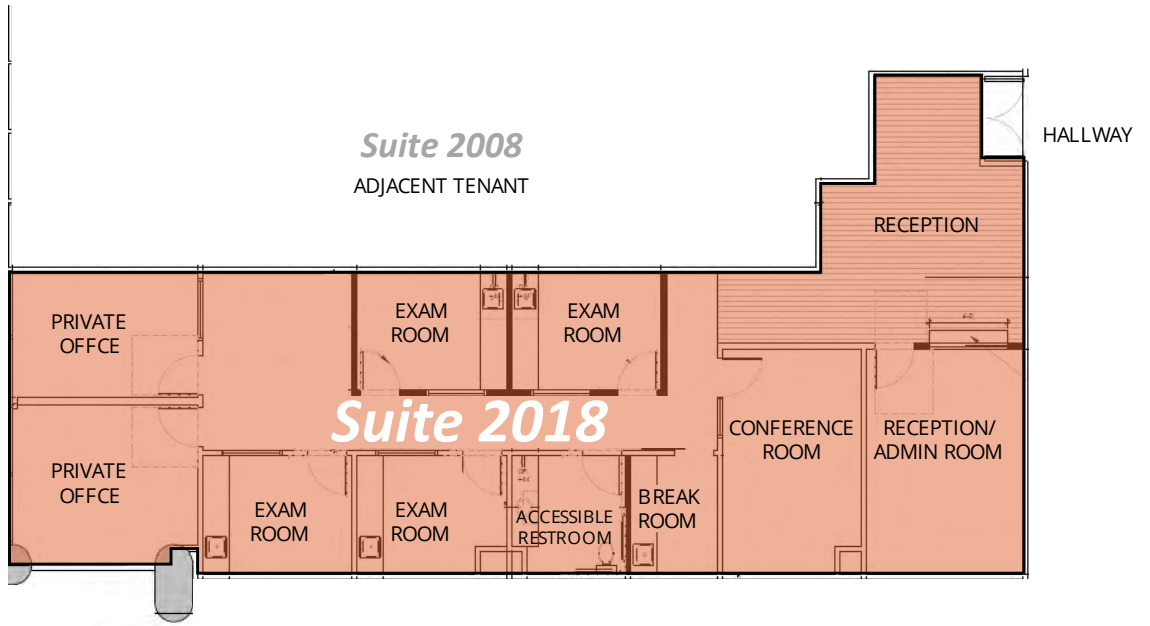


601 Van Ness Avenue, Suite 2018 San Francisco, California



601 Van Ness Avenue, Suite 2018

San Francisco, California



SECOND FLOOR

Suite 2018 ±2,376 RSF

- Medical office space **SUBLEASE** through April 30, 2027
- 4 large exam rooms
- 2 large offices with excellent window line
- Conference room
- Kitchenette
- Restroom
- Large waiting room and staff area