

2110 FOREST AVENUE

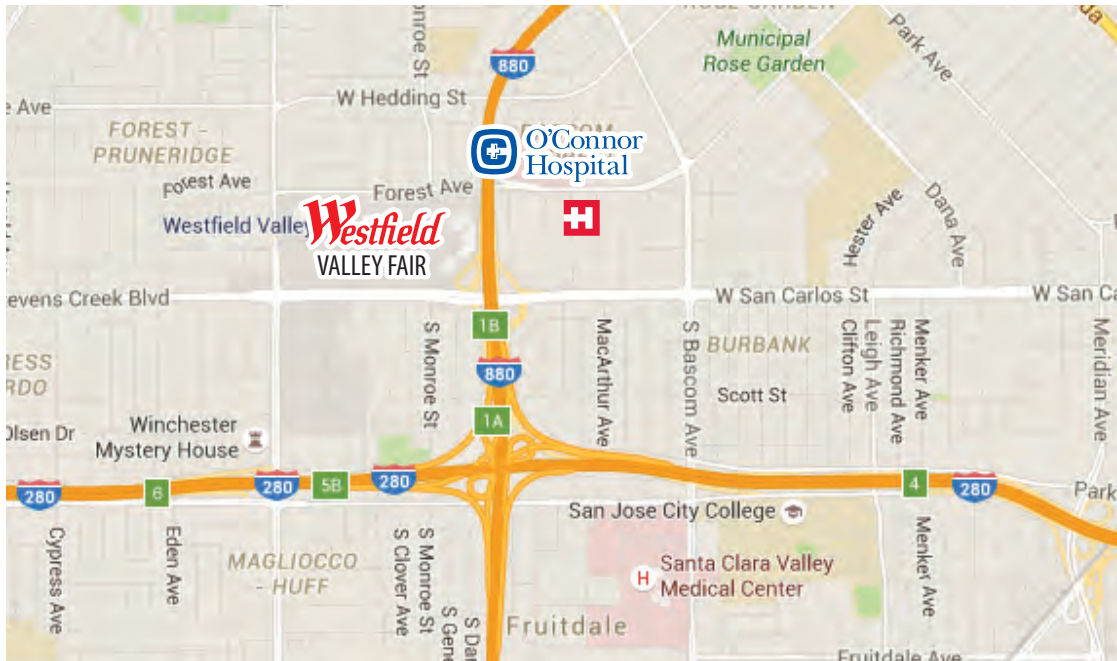
SAN JOSE, CALIFORNIA 95128

AVAILABLE SUITE:

Suite A: ±2,731 RSF

LEASE RATE:

\$3.95/RSF, Mod. Gross



FEATURES:

- » Cornerstone to O'Connor Hospital
- » Newly remodeled medical office unit
- » 6 exam rooms, private office, waiting and reception, and bathroom
- » Advanced Surgical Center Building
- » New Improvements

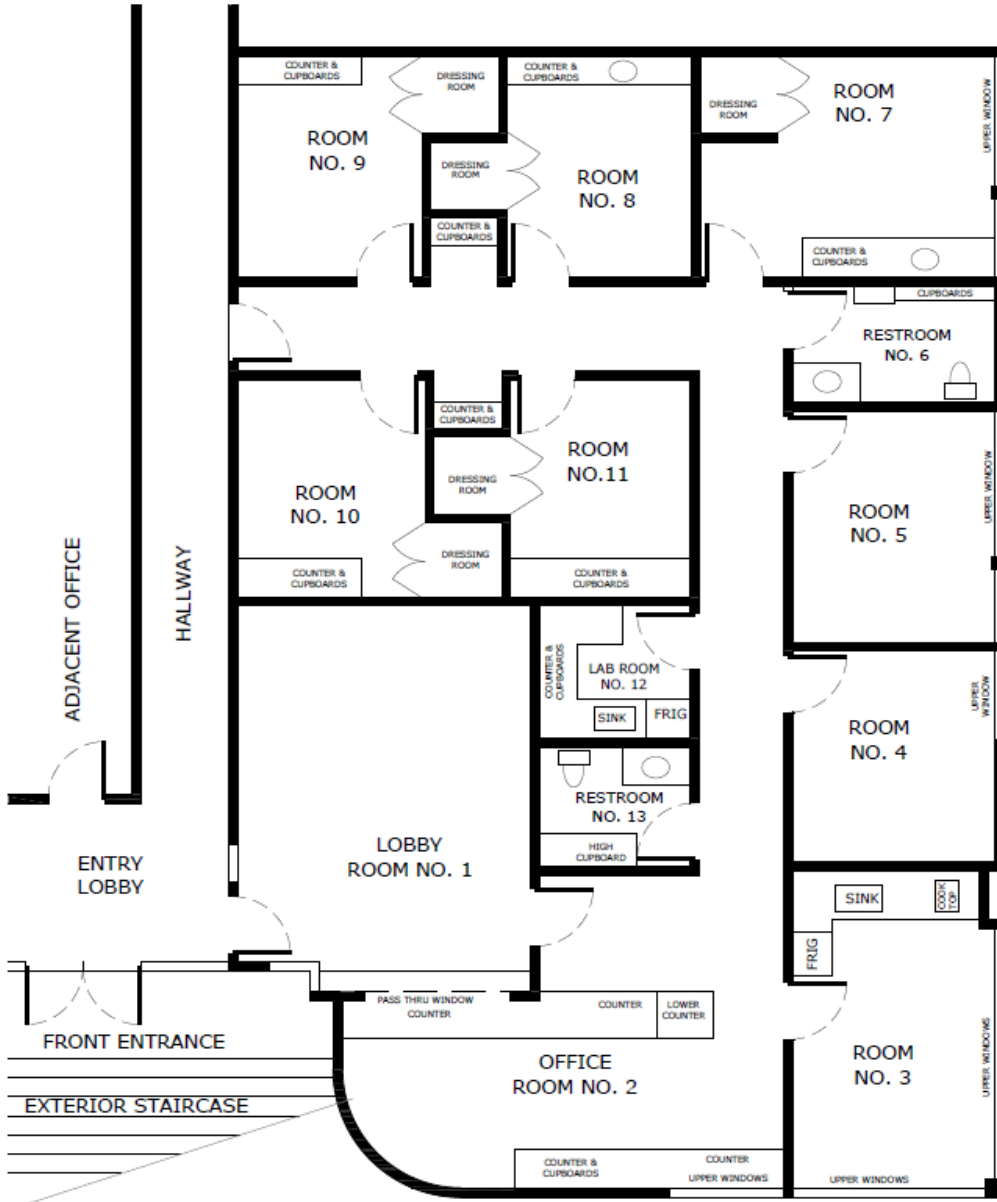


2110 FOREST AVENUE

SAN JOSE, CALIFORNIA 95128



Suite A:
±2,731 RSF



2110 FOREST AVENUE

SAN JOSE, CALIFORNIA 95128

